

LIFT IT USA

A Cargo Lift Company

OWNER'S MANUAL



OWNER'S MANUAL

Proudly designed, engineered, and manufactured in Wilmington North Carolina

Thank you for purchasing a cargo lift system from **LIFT IT USA!**

Please carefully review and understand the following information to enjoy years of enjoyment and safe operations of your new cargo lift.

Every cargo lift is custom-made by hand to meet the specific needs of your home. **LIFT IT USA** utilizes premium mechanical and electrical components, non-corrosive aluminum and stainless steel – and proudly made in the USA! Your cargo lift can move up to 1000 Pounds, travels approximately 12 feet per minute, engineered to withstand 144 MPH winds, and comes with a 5 Year Structural Warranty (1 year on mechanical and electrical).

SAFETY FIRST

Your safety is our priority - every cargo lift we manufacture comes standard with a **dual-cable arrest brake system, 1 hp marine grade electrical motor, mechanical power transmission**, dual **stainless steel aircraft cables** (cables are designed to individually support up to 7000 pounds). All these premium components are expertly assembled to provide years of reliable service and to effortlessly help you move heavy bulky items from one level of your home to the next, all easily controlled with a **wireless remote control**.

Lifting heavy household items has never been SAFER or MORE CONVENIENT.

LIFT IT USA – Committed to the next level!!

Still have questions?

Visit www.LIFTITUSA.COM or call **LOCAL (910)471-2252** or **TOLL FREE (833) 2 LIFT IT**

[WWW.LIFTITUSA.COM](http://www.LIFTITUSA.COM)

Table of Contents

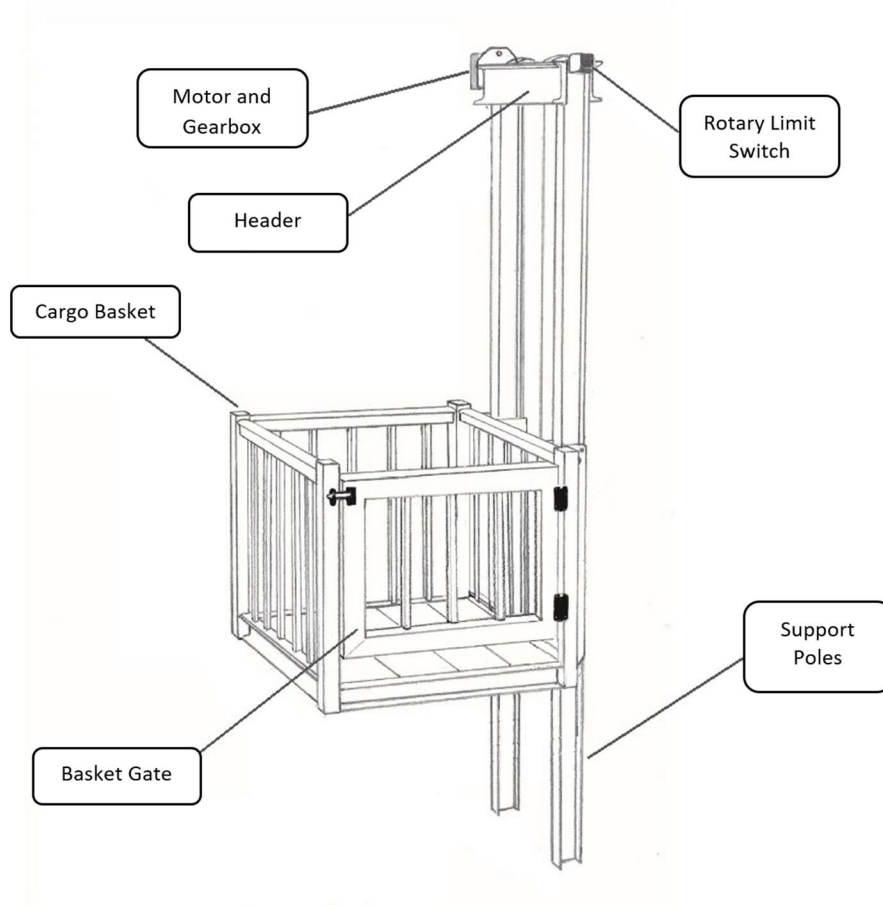
Product Description.....	3
Parts Diagram.....	3
Safety Instructions.....	4
Cable Arrest Brake.....	5
Basic Operations.....	6
Maintenance.....	7
Warranty.....	8

Product Description

LIFT IT USA designs, engineers, manufactures and installs residential cargo lift systems. These cargo lifts are designed to transport cargo and not designed for HUMAN TRANSPORT. Every cargo lift system is custom made to order at our factory in Wilmington North Carolina.

LIFT IT USA utilizes premium products to ensure years of reliable service. Stainless steel hardware and non-corrosive aluminum provide 1000 lbs. lifting capacity and can withstand the harsh elements of mother nature. Two 5" I-beam aluminum support poles provide strength and stability. The durable stainless steel enclosed motor designed for marine applications delivers strong and reliable power. Waterproof mechanical power transmission powers dual-winders with stainless steel aircraft quality cables for smooth movement and controlled stops. Dual cable brake arrest system for safety and wireless remote control for convenience deliver **QUALITY, SAFETY, STRENGTH, and SIMPLICITY**.

Backed by the industries best warranty and reliable service, you cannot go wrong with a cargo lift system **LIFT IT USA**.





Safety Instructions

LIFT IT USA recommends adhering to the following guidelines to ensure safe operations:

1. No one under 18 years of age should operate the lift without adult supervision.
2. Always ensure minimum 10' clearance of operating area (above, below, around) when in use.
3. Never operate under the threat of lightning or severe weather.
4. Never allow anyone except a certified **LIFT IT USA** technician to service your cargo lift.
5. Never exceed load capacity 1000 lbs.
6. Always ensure basket gates and deck gates are closed completely prior to engaging movement.
7. Never by-pass, remove, or otherwise disable any control sensors or safety features.
8. Never operate if there are signs of damage, making unusual noises or vibrations.
9. Never operate if cables appear frayed or damaged.
10. Never store wireless remote control in a pocket or any place where accidental or unintended operation may occur.





Dual Stainless Steel Cable Arrest Brake

A dual cable arrest braking system comes STANDARD with every LIFT IT USA cargo lift. The proprietary safety system locks the cargo basket in place in the event of mechanical failure.

**USER ERROR IS THE MOST COMMON CAUSE OF CABLE ARREST BRAKE DEPLOYMENT.
SLACK IN THE STAINLESS-STEEL CABLES OR LOSS OF CABLE TENSION OCCURS WHEN A BASKET GATE
OR DECK GATE IS LEFT OPEN OR THERE IS AN OBSTRUCTION IN THE TRAVEL PATH.**

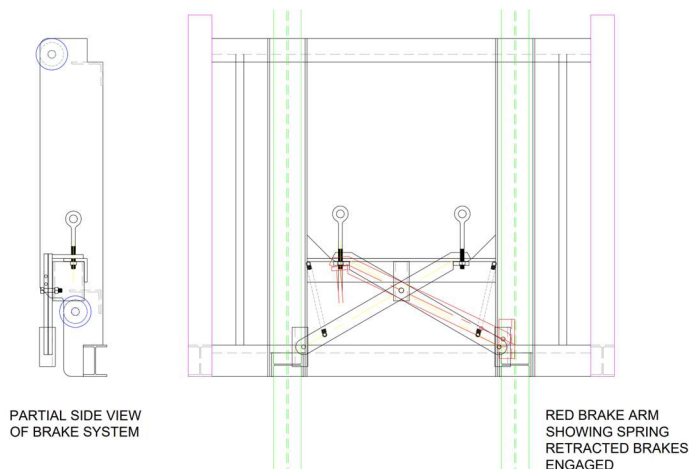
**DO NOT ALLOW ANY ITEMS (i.e. COOLERS, TRASH CANS) TO BE STORED
BELOW THE BASKET OR NEAR THE CARGO BASKET LANDING AREA.**

**DO NOT ALLOW ANY ITEMS (i.e. BEACH CHAIRS, GOLF CLUBS, CART HANDLES) TO PROTRUDE
OUTSIDE THE BASKET.**

**A BILLABLE SERVICE CALL FROM A CERTIFIED LIFT IT USA TECHNICIAN IS MOST OFTEN REQUIRED TO
RESET CABLE ARREST BRAKE SYSTEM AND RESPOOL THE STAINLESS-STEEL CABLES.**

THIS IS NOT COVERED BY LIMITED WARRANTY.

Unless you have been properly trained, do not attempt to disengage the arrest brake system or untangle cables yourself as this may result in equipment damage, injury or death.





Basic Operations

1. Main electrical power must be engaged prior to operating
2. The main control box contains an ON – OFF electrical toggle switch. To operate, the switch must be in the ON position.
3. Prior to operating the cargo lift, all gates must be closed. Nothing must be in the way to block the movement of the cargo lift.
4. Basic operating procedures are as follows:
 - a. Press **'UP'** to move the cargo lift up
 - b. Press **'DOWN'** to move the cargo lift down
 - c. Press **'STOP'** to halt movement of the cargo lift.

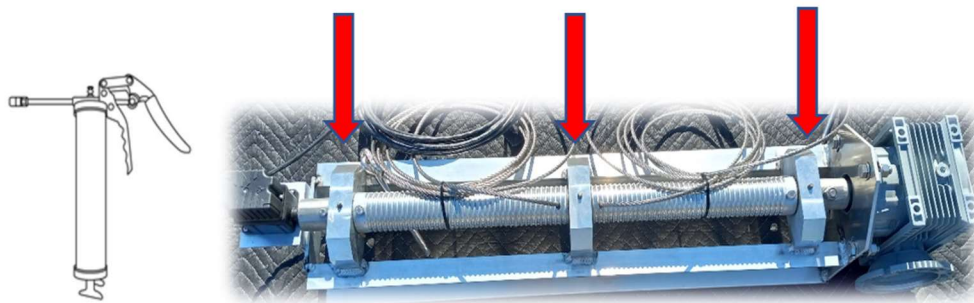


Gem remotes require 2 x ERC2032 (replace CR2032) Lithium batteries, which should be replaced annually.



Basic Maintenance

LIFT IT USA cargo lifts are designed to be virtually maintenance free. Every cargo lift is manufactured using premium components. To help keep your cargo lift performing like new, it is recommended to change batteries in wireless remote(s) and lubricate header at zerk fittings using premium marine grade grease.



Additional service and maintenance recommendations to help keep your cargo lift safe and operating like new include:

1. Optional Preventative Maintenance Service and safety inspection performed annually by factory trained specialists. Call LIFT IT USA for more information or to schedule service 910-471-2252.
2. Cargo lift should only be serviced by **LIFT IT USA** factory trained specialist. **Unauthorized service or repairs or use of aftermarket or non-original equipment manufacturer (OEM) parts or components will void warranty and may be unsafe.**
3. Cargo lift should be inspected any time the structure of the home is changed or modified.

**NEVER OPERATE YOUR CARGO LIFT IF THERE ARE ANY OF THE
FOLLOWING CONDITIONS:**

**Evidence of any structural deterioration of either the
cargo lift or the adjacent structure (home, deck, etc)*

**Evidence of frayed cables or tangled cables*

**Unusual noise or vibration*

Explanation of pictograms used in manual:



IMPORTANT SAFETY INFORMATION RELATED TO SAFE
OPERATIONS TO PREVENT EQUIPMENT DAMAGE OR INJURY



IMMEDIATELY DISCONTINUE USE OF CARGO LIFT. CONTACT
THE MANUFACTURER FOR SERVICE.



CALENDAR REMINDER FOR BASIC MAINTENANCE



CARGO LIFT LIMITED WARRANTY

Thank you for purchasing a cargo lift from LIFT IT USA

Protect your investment by registering your equipment and activating the LIMITED WARRANTY within 10 days of installation at:

www.LIFTITUSA.com/product-registration/

Information required to complete product registration include:

Product Owner Name

Physical Address

(location of the cargo lift)

Telephone Number

E-mail Address

Cargo Lift Serial Number

(see diagram for location of serial number).

The limited warranty is extended to the original product owner and is not transferrable. It is the product owner's responsibility to complete registration and activate warranty coverage. Failure to register product within 10 days of installation shall void all warranty coverage.

This limited warranty supersedes and replaces all previous oral or written agreements, memoranda, correspondence, or other communications between the parties hereto relating to the subject matter hereof.

Cargo lifts, aluminum gates, custom aluminum railing, canopy tops, custom screen doors, and EZ access ramps manufactured and installed by LIFT IT USA include the following limited warranty effective the date of product registration:

1. Aluminum and steel structural components are free from manufacturing defects or defects in craftsmanship for a period of 5 years.
2. Electrical components (motor, control box, micro-limit switch) free from manufacturing defects or electrical failure for a period of 1 year.
3. Mechanical power transmission (gearbox) free from manufacturing defects or mechanical failure for a period of 1 year.
4. Optional canopy tops featuring Sunbrella Shade and Marine Fabrics [Warranty | Sunbrella](#) or Tempotest Marine and Awning Fabric [Parà Tempotest - USA \(para.it\)](#) come with a 10 Year Limited warranty directly from manufacturer. **Fabric warranty claims must be submitted directly to the product manufacturer.*
5. Optional custom built EZ access ramps (aluminum or pressure treated wood), aluminum railing and aluminum gates are free from manufacturing defects or defects in craftsmanship for a period of 1 year.

The LIFT IT USA limited warranty does not cover the following:

- 1 Routine maintenance – examples include reset limit switch stop-settings (post-installation), lubricating winder, adjusting hinges and latches, replacing batteries, or syncing remote control devices.
- 2 Repair or replacement of pre-existing structures and structural support such as decks, deck railing, deck railing posts, or stairs.
- 3 Service calls required to untangle and respool cables or reset dual cable arrest system resulting from improper operation, operator error or negligence.
- 4 Stainless steel cables are deemed normal wear & tear items and not covered under warranty.

Limited warranty does not cover service or repair work performed by anyone other than LIFT IT USA authorized personnel. Repair or service performed by anyone other than LIFT IT USA authorized personnel, without advance written approval, shall void warranty. Failure to use LIFT IT USA OEM proprietary components and parts for repairs shall void warranty.

Limited Warranty does not cover replacement or repair of any components damaged by acts of God, abuse, negligence, installation completed by

unauthorized personnel, or failure to follow manufacturers guidelines outlined in owner's manual.

Changes or modifications made to the cargo lift basket, gate(s), braces, I-beams, footer, motor, gearbox, wiring, or any other components, without the prior, express written consent of LIFT IT USA will immediately void all warranties. LIFT IT USA strongly advises against and shall not be held liable for any damages resulting from unauthorized modifications or alterations to any cargo lift component.

Limited warranty will be void should cargo lift be used for any cargo exceeding 1000 pounds. The purchaser understands that the lift is designed and engineered to move heavy, bulky cargo and not for human transport.

LIFT IT USA, LLC its owners, partners, dealers, and employees shall be held harmless of any liability if the cargo lift is used for any other purpose than specified in owner's manual. LIFT IT USA, LLC is not responsible for incidental, consequential or punitive damages resulting for the use of this product whether direct, indirect, special, incident, or consequential, regardless of the legal theory asserted, including warranty contract, negligence, strict liability or other. Reckless, incorrect, or negligent use of cargo lifts can result in serious injury up to and including loss of life. For that reason, all operators should read and understand the owner's manual prior to operating a LIFT IT USA cargo lift.

Product registration is a condition precedent to LIFT IT USA, LLC's obligation under this limited warranty. By registering the product, the purchaser acknowledges the terms and conditions set forth for safe use, warranty coverage, and product liability.

Location of product serial number:

